

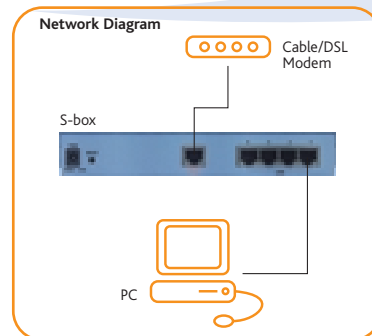
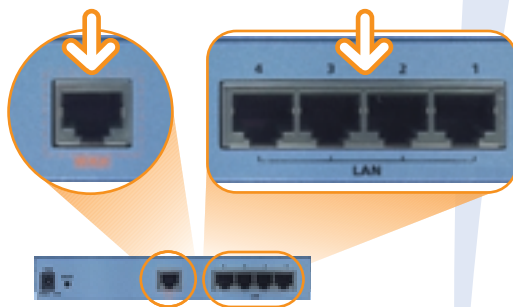
1 Power Up Your S-box

- Connect the power adapter to the power port on the rear panel of the S-box, and then plug it into a power outlet.
- The Power LED on the front panel will start blinking, indicating your S-box is now on.




2 Connect Your Network

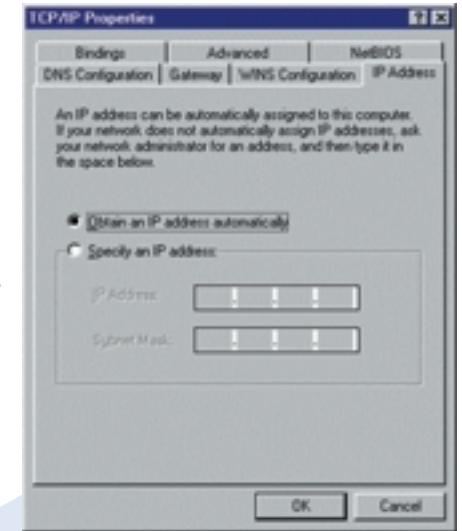
- Connect one end of the network cable provided with your S-box to the WAN socket on the rear panel of your S-box, and the other end to your cable or DSL modem, as shown in the figure below.
- Make sure your DSL or cable modem is powered on.
- The WAN LED will light up, indicating proper connection to your modem.
- Connect one end of your network cable to one of the four S-box LAN ports and the other end to your PC. If you have additional PCs or other network devices you can connect them to other LAN ports.
- A corresponding LAN LED will light up, indicating each connected computer.




3 Configuring Your PC

Before continuing, make sure all your PCs are configured correctly.

- Click  **Start** **Settings**, and then **Control Panel**. The **Control Panel** opens.
- In Windows 98/Millennium double-click on **Network**. The **Network** dialog box opens. In Windows 2000/XP double-click on **Network** and **Dial-up Connections**, then right-click on **Local Area Connection** and click **Properties**. The **Local Area Connection Properties** dialog box opens.
- Double-click **Internet Protocol (TCP/IP)** or the **TCP/IP** service for your Ethernet card. The **TCP/IP Properties** dialog box opens.
- Make sure **Obtain an IP address automatically** is selected. In Windows 98/Millennium make sure **Disable DNS** is selected. In Windows 2000/XP make sure **Obtain DNS server address automatically** is selected.
- Click **OK** to close the dialog box, and click **OK** again to apply the settings.
- You may be prompted to restart your PC. Click **Yes**.
- Restart your DSL or cable modem.




-  **Note:** If you are using an operating system other than Windows 98/Millennium/2000/XP, consult the SofaWare S-box Getting Started Guide.

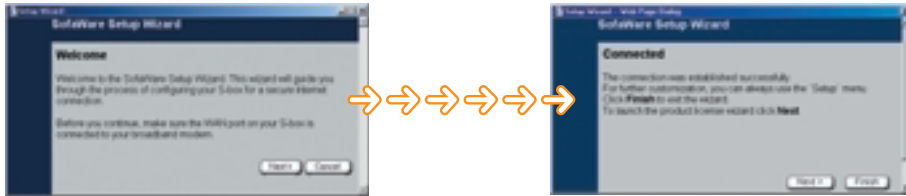
4 Set Up Your Connection

- Launch your Web browser and type **http://my.firewall** in the address bar. Follow the instructions for setting up your administrator password.



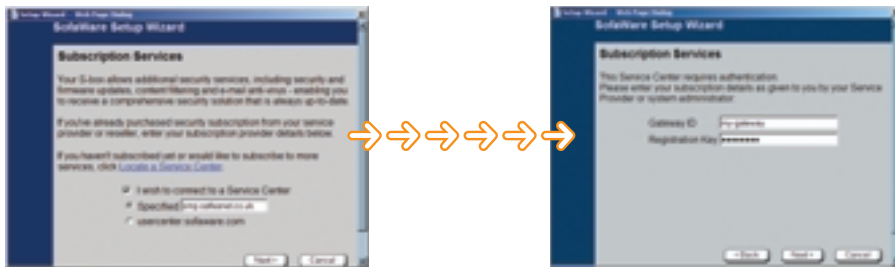
 **Note:** If the S-box page fails to load, verify the S-box has been installed properly. If your browser is configured to use a proxy server make sure **my.firewall** is included in the browser's exception list.

- After logging on for the first time, the **Setup Wizard** opens automatically. If, at a later time, you wish to return to this wizard, click **Setup**, and then click **Setup Wizard**.
- The wizard will walk you through the connection setup process. Fill in the parameters as provided by your service provider or system administrator, and click **Finish**.



5 Subscribe to Additional Services

- To connect to the safeAnet management portal, enter **smp.safeanet.co.uk** as the service center. When prompted enter the **Gateway ID** and **Registration Key** as specified in your registration details.



Quick Start Guide

safeAnet
Managed SofaWare Service

